



EMERALD FOREST APARTMENTS



100 Forest Drive
Biscoe, North Carolina 27209
910.354.2920 (phone)
910.401.1744 (fax)
emeraldforest@upmapartments.com

NOW ACCEPTING APPLICATIONS!

CALL OR DOWNLOAD APPLICATION FROM:

www.upmapartments.com

UNITS OFFERED:

TWO BEDROOM, TWO BATH

1,001 square feet

12-month lease ranging from \$270 to \$495

THREE BEDROOM, TWO BATH

1,164 square feet

12-month lease ranging from \$530 to \$565

FOUR BEDROOM, TWO BATH

1,341 square feet

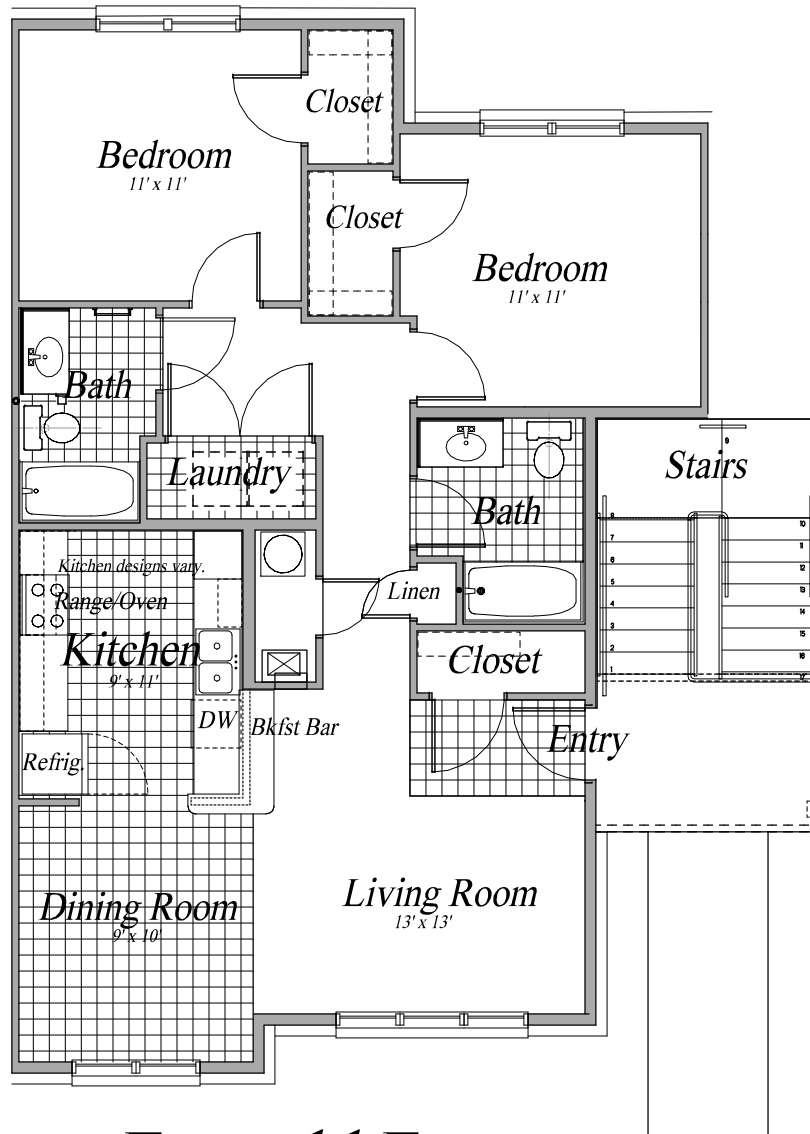
12-month lease at \$595

**** INCOME RESTRICTIONS APPLY ****

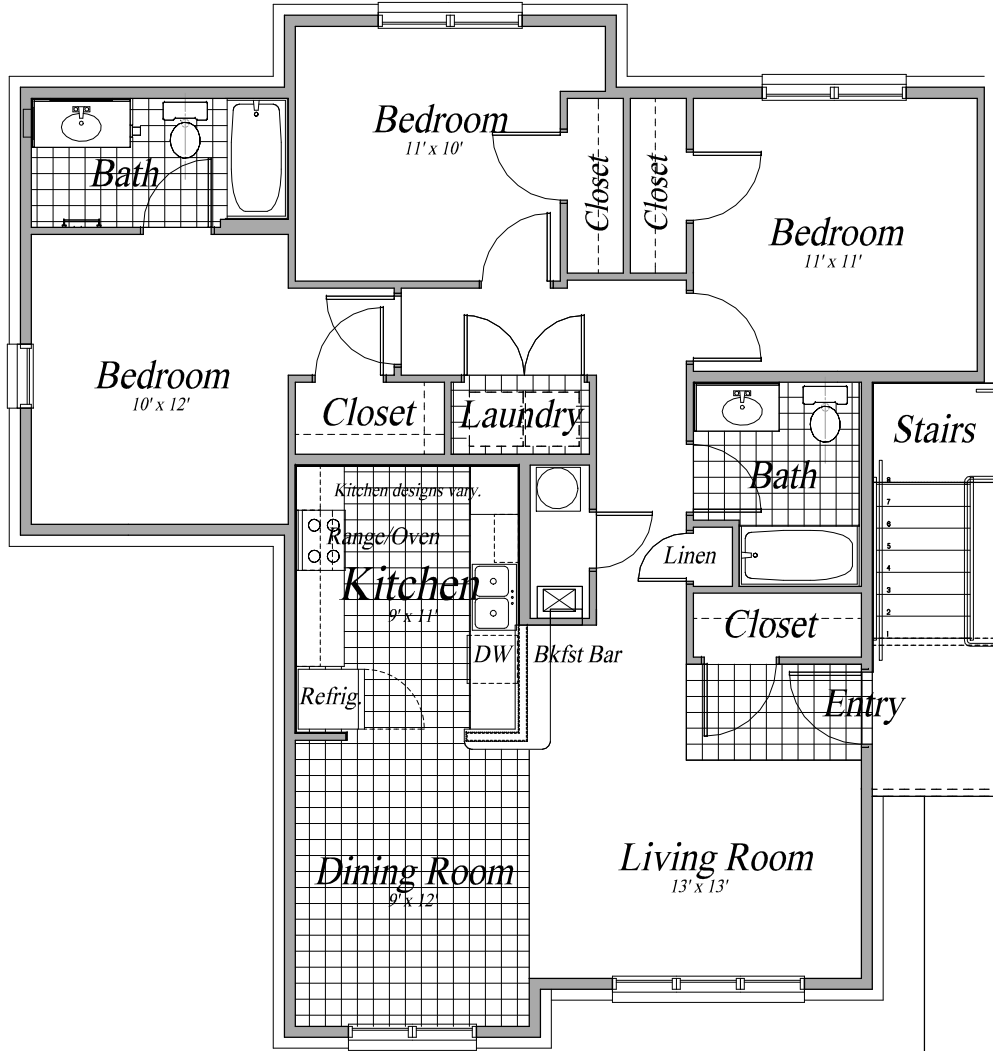
FLOOR PLANS AND AMENITIES INCLUDE:

- ✓ **Water, sewer and trash/recycling included in rent**
- ✓ Energy Star appliances
- ✓ Grocery and numerous shops and restaurants within walking distance
- ✓ Community/multi-purpose room with kitchen
- ✓ Computer center and laundry facility on site
- ✓ Large closets and storage; washer/dryer connections; ceiling fans
- ✓ Playground, large open play area, gazebo, covered picnic area and outdoor seating
- ✓ Professionally managed by full time management and maintenance, plus 24-hour emergency maintenance

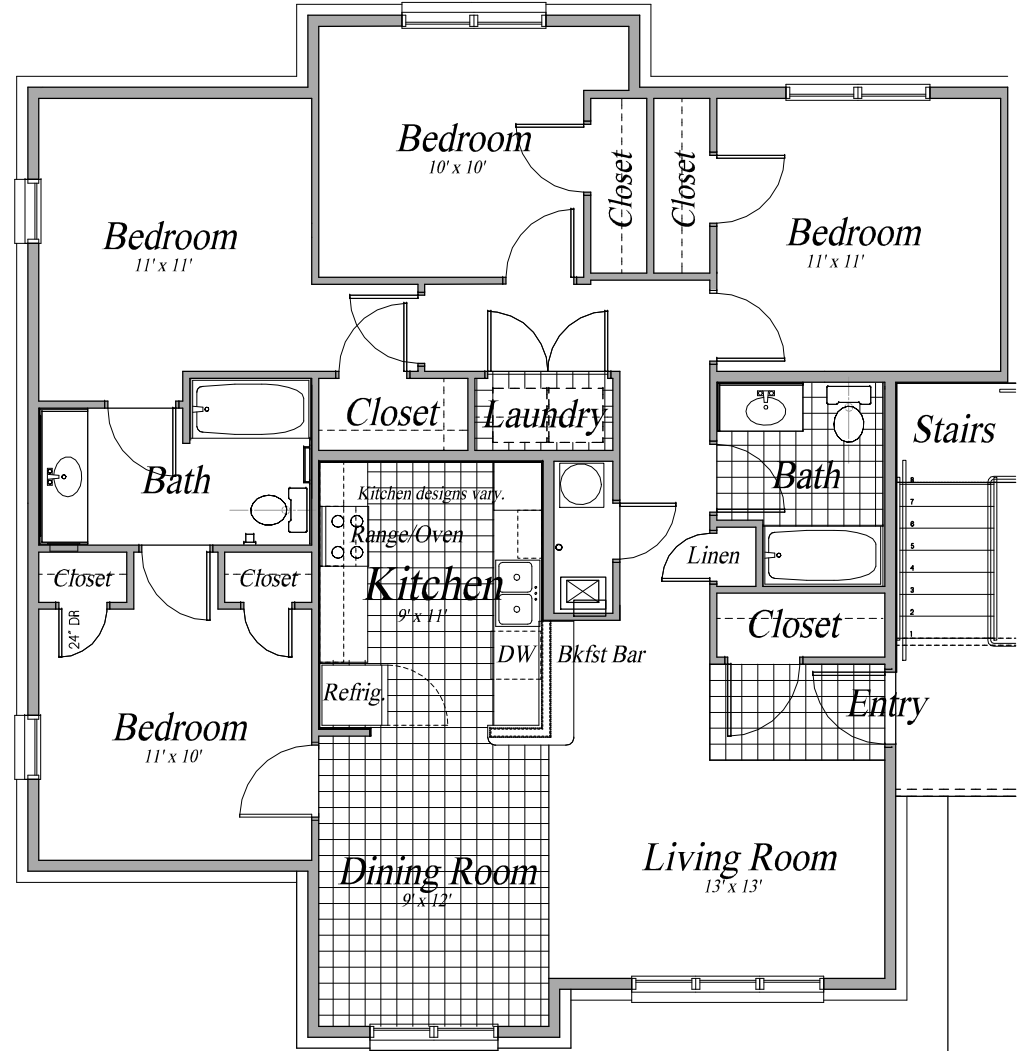
-
- \$30.00 non-refundable application fee (per household member over the age of 18)
 - Credit, criminal and landlord checks required
 - Security deposit of one month's rent required
 - All monies must be paid by certified funds/money order
 - No pets allowed



Emerald Forest
 2 Bedroom Plan - 1,001 SF



Emerald Forest
 3 Bedroom Plan - 1,164 SF



Emerald Forest
 4 Bedroom Plan - 1,341 SF